

HD-01 High Definition Beauty Scope

SKIN & HAIR ANALYSER

USER'S MANUAL



USER'S MANUAL

Congratulations on your purchase of this High Definition UVC (USB Video Class) Microscope with multi-applications.

We believe the versatility and ease of use of this product will lead you to obtain more success in business deals and create more profit for you.

The High Definition UVC Microscope is guided cool light surrounding the lens and automatically provides the best illumination to enable you to obtain the perfect optimum viewing angle and color of the target object on the color monitor.

HD-01 provides high resolution images for both **640x480 VGA mode or 1280x720 HD mode switchable. You can even enjoy the best high clarity especially under 1280 x 720 HD mode.**

*** The unique feature of HD-01 -----
UVC (USB Video Class) camera, plug & play,
no USB Driver needed.**

We offer 2 image programs for free gifts for facilitating you to make: 1 / 2 / 4 frames freeze function or before / after comparison & image store.

1. ACCESSORIES

1-1 Standard accessories:

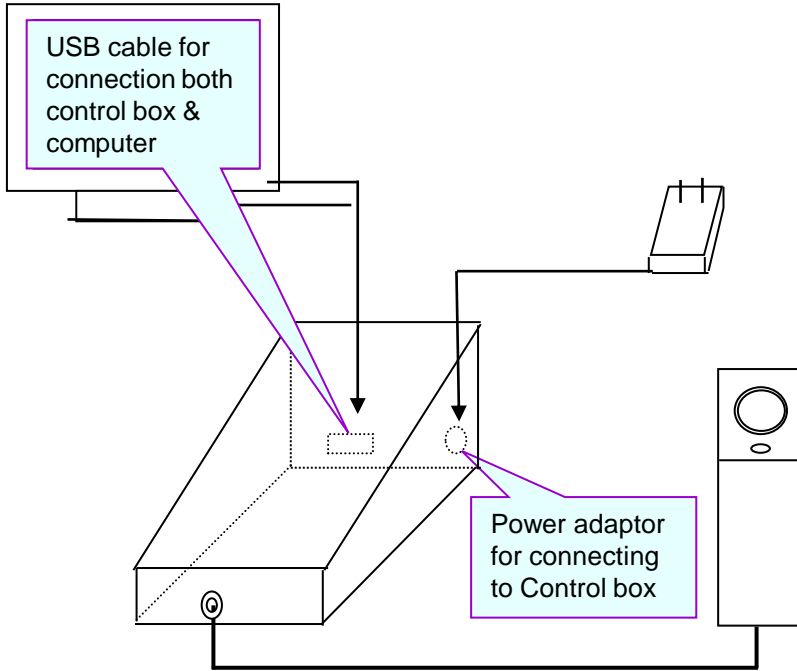
ITEM	DESCRIPTION
1	HD-01 High definition UVC (USB Video Class) Beauty Scope + Handy probe * 640x480 VGA mode or 1280 x 720 HD mode switchable
2	Probe stand
3	USB cable
4	2 image programs for free: a. "My Capture Pro. 1/2/4" --- 1 / 2 / 4 frames freeze & store b. "HD-01 Capture" --- image capture & store, before / after comparison
5	AC/DC Adaptor (Input: 100V ~ 240V, Output: DC5V, 2.0A)
6	User's manual

1-2 Optional accessories:

ITEM	DESCRIPTION
1	HD-1X ADJ. :Lens 1x focus adjustable (for full face/body, half body, partial face)
2	HD-50 : Lens 50x (for skin inspection)
3	HD-50RN : Lens 50x polarized (for surface/deeper layer skin check)
4	HD-200 : Lens 200x (for hair, scalp inspection)
5	HD-650 : Lens 650x (for hair cuticle inspection)
6	HD-Iris : Iridology Lens (for iridology analysis)
7	HD-320 : Microcirculation lens
8	HD-50RN(UV): 50x UV lighting polarized lens (for acne inspection)
9	BX003 : Carrying case
10	HD-S.M.E.P Simple software --- offers 4 in 1, (sebum / moisture / elasticity / pigment) skin diagnosis auto analysis, test result saving only)
11	HD-S.M.E.P.+CMS (Customer Management System) software --- offers 4 in 1 (sebum/moisture/elasticity/pigment) skin diagnosis auto analysis, client data set-up, skin care products or treatment recommendation, history comparison, data printing
12	HD-MA software --- for skin/ hair / iris image store (left/right 6 images each side), before / after comparison & customer management system
13	HD-Pro Capture software --- for history / skin / hair / microcirculation / iris database comparison & customer management system)
14	HD-Pro Video Master software --- for skin / hair / acne / microcirculation image store (left/right 6 images each side) / video recording, comparison & customer management system)

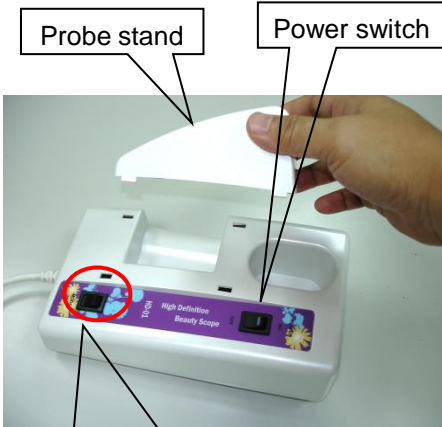
2. SYSTEM BLOCK DIAGRAM

* Suggestion: optimum display resolution ” 1366 x 768 (or up)



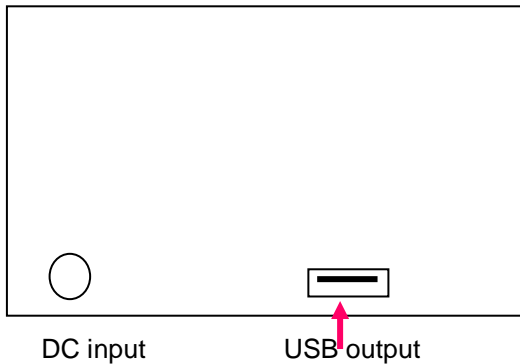
3. FRONT / REAR PANEL & PROBE

(FRONT PANEL)



* Suggestion: optimum display resolution” 1366 x 768 (or up)

(REAR PANEL)



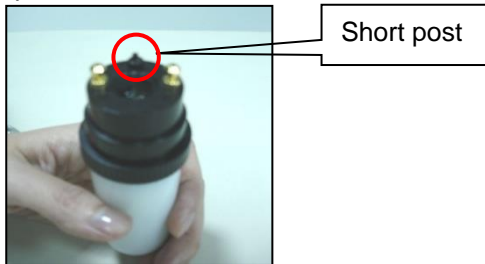
4. ATTACHING LENS TO HANDY PROBE

4-1 ATTACHING LENS TO HANDY PROBE

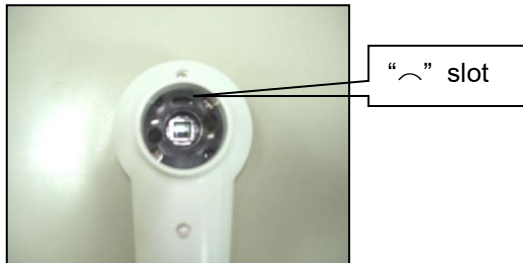
(1) Take off the anti-dust cover of the handy probe.



(2) Find the short post on the lens.

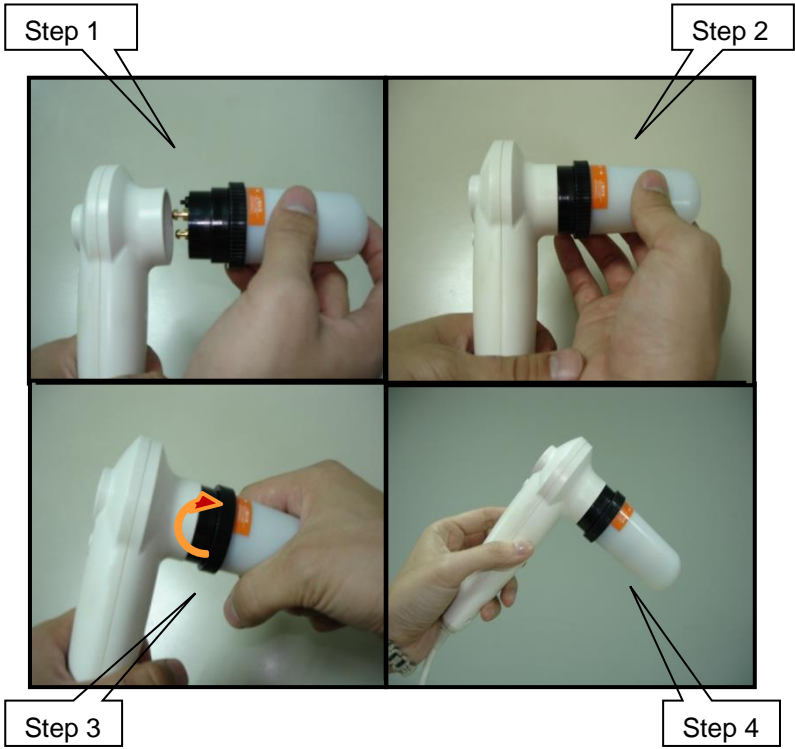


(3) Look at the front side of handy probe, you will find there's a “ \frown ” shape slot.



(4) Match (plug in) the post to the “ \frown ” shape slot to ensure they are fully combined. Turn clockwise to screw on the lens, anti-clockwise to screw off the lens.





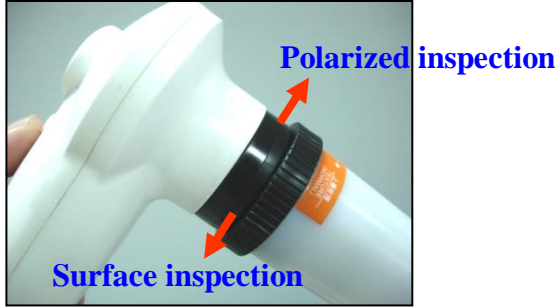
4-2 Place the probe stand on the control box.



5. OPERATION OF OPTIONAL LENSES

(1) 50x Polarized lens

You can rotate the black rubber ring anti-clockwise to make surface skin inspection; rotate the black ring clockwise you can make deeper layer skin inspection.



(2) Normal 50x and 200x lens

The lens has been well adjusted the focus. You can slightly contact skin or hair for image capture.



(3) 1x focus adjustable lens (for styling purpose)

The focus range for this lens is adjustable. You can rotate the black ring clockwise or anti-clockwise to get the right focus of full face/body, half body, or partial face).

* This lens does not consist any inside LED lamp, therefore getting enough environmental outer light source is required.



(4) 650x lens (for hair cuticle inspection)

The focus for this lens is adjustable. You can rotate the black ring clockwise or anti-clockwise to get the right focus to inspect the hair cuticle.



(5) 50RN(UV) lens

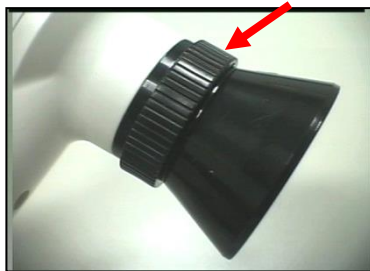
This lens is specially designed for ACNE inspection. It needs to be applied under "HD-Pro Video Master" software.

* Under the UV light of 50RN(UV) lens, the acne will appear in fluorescent brown or red color. It is very useful in observation.



(6) Iris lens (for iridology analysis)

The focus range for this lens is adjustable. You can rotate the black ring clockwise or anti-clockwise to get the right focus of the iris image.

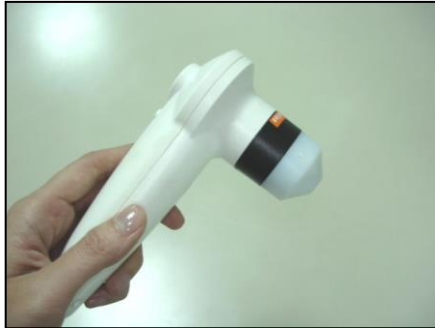


Anti-infection cap, please attach it on the top side of the lens.



The operation of iris diagnosis.

(7) Microcirculation lens --- for observing the thickness, shape of the blood vessels, the speed of blood flow of the nail-tip.



(a) Suggested test part: left ring finger, see the picture for available area.



(b) Operation method:

Please apply penetrating oil (vegetable oil) on the test part in order to get clearer image.

Method 1: Hand hold operation

You can hold the handy probe, contact the lens to the available area of left ring finger

[\(Refer to operation in next page\)](#)

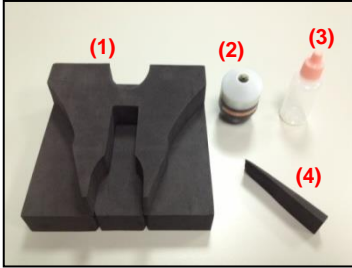
Method 2: Easy stand operation

You can also fix the handy probe on a stand, adjust the working distance to get right focus & clear image.



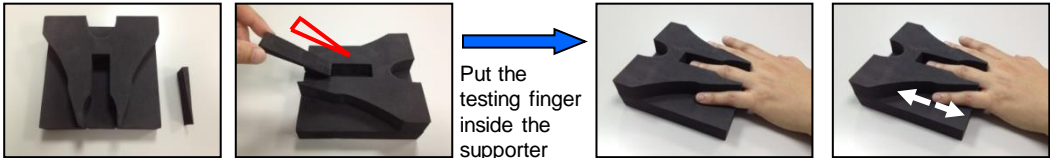
320x Microcirculation Lens Application

1. Standard package



- (1) Finger supporter (Probe stand) ×1 pc
 - (2) 320x Microcirculation lens×1 pc
 - (3) Empty bottle ×1 pc
(Please add vegetable oil)
 - (4) Slope plate to adjust finger height ×4 pcs
- ※ **Optional: “HD-Pro Video Master program”**
which gives good **image capture & video recording** for **microcirculation condition observation**

2. Usage of Finger supporter



Please insert the slope plate in the supporter
(If the finger is thicker, the slope plate might be unnecessary.)

Put the testing finger inside the supporter

You can move the testing finger backward & forward to find the best view position.
(Ref: 3. Operation of microcirculation inspection)

3. Operation of Microcirculation Inspection



Please apply vegetable oil on the finger (suggested test part: left ring finger, just near to the nailfold), oil applied area about 1cm².

Hold the HD-01 handy probe with 320x lens, contact the lens to the applied area.

You can get right focus & clear image by adjusting the probe in a slight slope or moving finger backward & forward

4. The operating position between the operator & the tested



Please hold the handy probe in a parallel direction of the tested finger, then the microcirculation image will be in forward direction to facilitate the microcirculation shape and dynamic observation.

5. Put the handy probe back to probe stand



6. Connection to PC --- 2 free Capture programs

HD-01 provides UVC (USB Video Class) camera, USB plug & play”, no USB driver needed!

- * System requirement: a. IBM compatible PC
- b. CPU: 2.0GHz Dual-Core
- c. Intel® Core™ i3 Processor above
- d. HDD: 500G or 1TB above
- e. RAM: 4GB DDR4 or above
- f. Display resolution: 1366x768 (1920x1080 better)
- g. USB port: 3.0*1, 2.0*2

*** Required OS: Windows 7, 8 & Windows 10**

*** Remark: HD-01 is with 640x480 VGA mode or 1280x720 HD mode switchable function**

6-1 Power on your IBM compatible computer. Insert “HD-01 Beauty Scope” CD-R into the CD-ROM drive.


6-2 The CD-R will auto-run or click “My computer” / CD-ROM / “Setup.exe to show the page as below:



6-3 The CD contents include :

(1) “My Capture Pro. 1/2/4” ” program (Refer to instructions: P.14-22):

This program assists you to make single / 2 splits (left & right) / 4 splits frame freeze & store function.


Click “My Capture Pro. 1/2/4” Program, choose the language you need and “1-2-4 CAPTURE” icon  will be automatically installed on computer desktop.

(All Windows OS are available.)



(2) “HD-01 Capture” program (Refer to instructions: P.23-31) :

This program assists you to get instant image freeze, store and also assists history image comparison.

Click “HD-01 Capture”, according to your Windows OS, choose the correct version to install. And “HD-01 Capture” icon  will be automatically installed on computer desktop.



(3) User’s Manual

7. “My Capture Pro. 1/2/4” Program application

- (1) Complete the installation in accordance with the system block diagram and fix the lens. Turn on the switches of both the unit and your computer.
- (2) Double click “1-2-4 CAPTURE” icon on computer desktop to enter the program.



(3) “1-2-4 CAPTURE” home page

Power on both the unit and your computer and enter “1-2-4 CAPTURE” program, the default window is in 640x480 VGA (4:3 screen) mode. If your computer screen resolution is with 1366 x 768 (or up), you can press “MODE” switch to 1280 X 720 HD mode (16:9 Wide screen) for enjoying the image in best high clarity.



In this page it means the screen window is defaulted on 640x480 VGA (4:3) mode.

If your screen is 16:9, the hint is reminding you to press HD-01 “MODE” switch to 1280 X 720 HD mode (16:9 Wide screen) for enjoying the image in best high clarity.

您的電腦解析是 16:9 請切換 “MODE” 功能鍵為HD

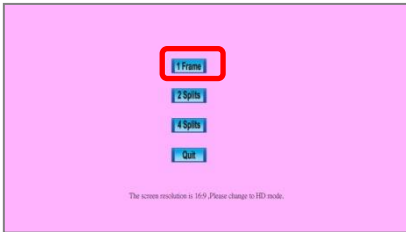
單定格
雙定格
四分割
離開

Screen mode: 16:9

7-1 Operation procedures under 640 x 480 VGA (4:3) mode

While operating Freeze or Release (Re-Capture) function, you can press “Frame Freeze” button on the handy probe or press “Freeze” in the program page.

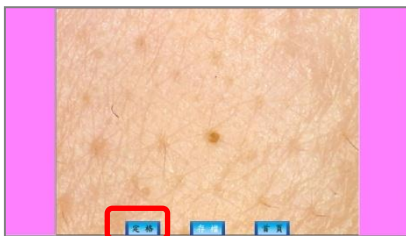
7-1-1 Single frame freeze (4:3)



Click “1 Frame”



Entering live window.



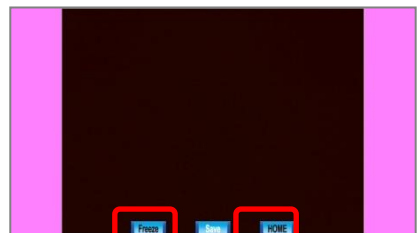
Capture the image by pressing “Freeze” button.



Press “Save” to save image. Or you can get new image by pressing “Capture”.

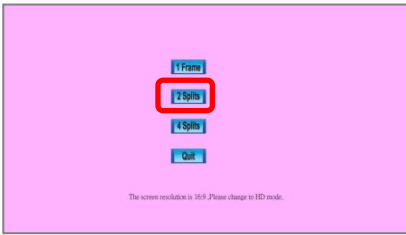


Find the folder you want to save, input the file name and press “Save”. Then this image will be saved in “.jpg” type.



After saving image you can press “Capture” to continue capture or you can press “HOME” to choose other function.

7-1-2 2 Split frames freeze (4:3)



Click "2 Splits".



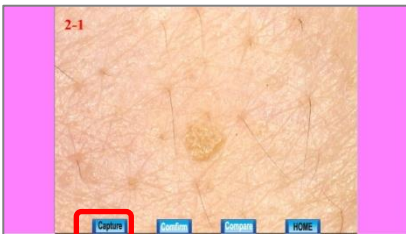
Entering 2-1 live window.



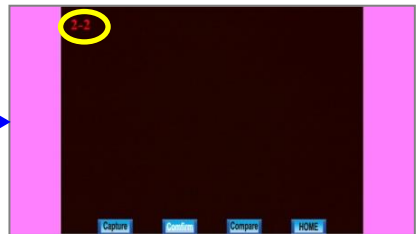
Capture the image by pressing "Freeze" button.



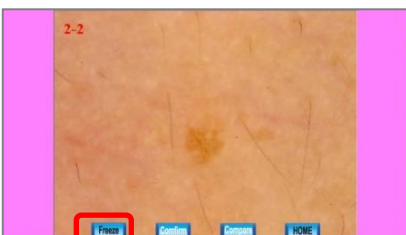
(Press "Re-Capt." if you do not like 2-1 captured image.) Then press "Confirm".



2-1 freeze completed, press "Capture" to 2-2 image capture.



Entering 2-2 live window.



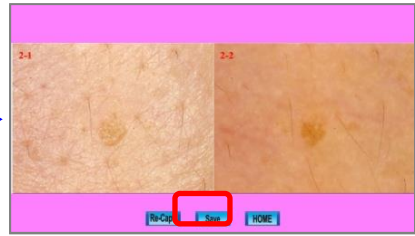
Capture the image by pressing "Freeze" button.



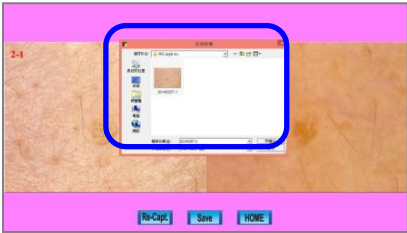
(Press "Re-Capt." if you do not like 2-2 captured image.) Then press "Confirm".



2-2 image capture completed. Press **“Compare”** to make 2 split frames comparison.

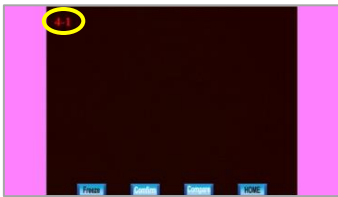


2 split frames comparison, you can press **“Save”** to save image (or **“Re-Capt.”** to continue new image capture).

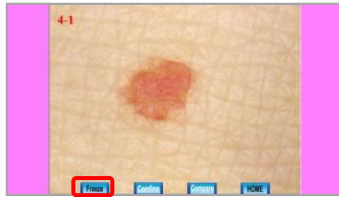


Find the folder you want to save, input file name and press **“Save”**. Then this image will be saved in **“.jpg”** type. After this, you can press **“Re-Capt.”** to continue new capture or you can press **“HOME”** to choose other function.

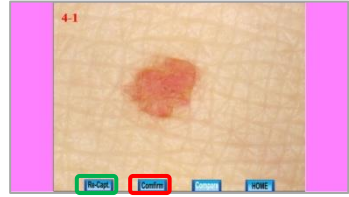
7-1-3 4 Split frames freeze (4:3)



Click **“4 Splits”** from home page, entering 4-1 live window.



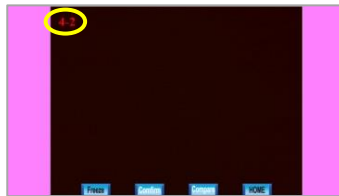
Capture the image by pressing **“Freeze”** button.



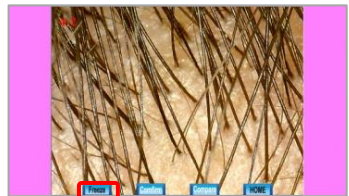
(Press **“Re-Capt.”** if you do not like 4-1 captured image.) Then press **“Confirm”**.



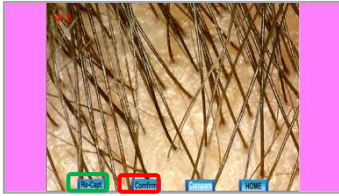
4-1 freeze completed, then press **“Capture”** to 4-2 image capture.



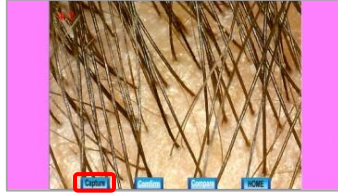
Entering 4-2 live window.



Capture the image by pressing **“Freeze”** button.



(Press **"Re-Capt."** if you do not like 4-2 captured image.) Then press **"Confirm"**.



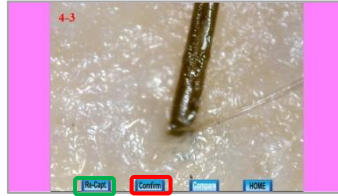
4-2 freeze completed, then press **"Capture"** to 4-3 image capture.



Entering 4-3 live window.



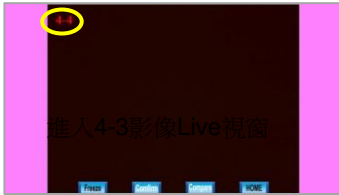
Capture the image by pressing **"Freeze"** button.



(Press **"Re-Capt."** if you do not like 4-3 captured image.) Then press **"Confirm"**.



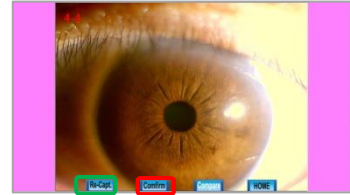
4-3 freeze completed, then press **"Capture"** to 4-4 image capture.



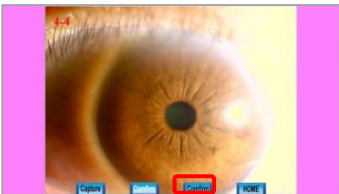
Entering 4-4 live window.



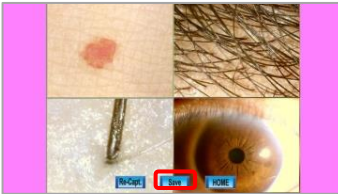
Capture the image by pressing **"Freeze"** button.



(Press **"Re-Capt."** if you do not like 4-4 captured image.) Then press **"Confirm"**.



4-4 image capture completed. Press **"Compare"** to make 4 split frames comparison.



4 split frames comparison, you can press **"Save"** to save image (or **"Re-Capt."** to continue new image capture).

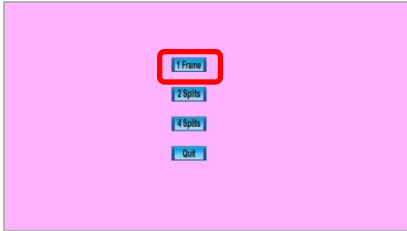


Find the folder you want to save, input file name and press **"Save"**. Then this image will be saved in **".jpg"** type. After this, you can press **"Re-Capt."** to continue new capture or you can press **"Home"** to choose other function.

7-2 Operation procedures under 1280 x 720 HD (16:9) mode

While operating Freeze or Release (Re-Capture) function, you can press “Frame Freeze” button on the handy probe or press “Freeze” in the program page.

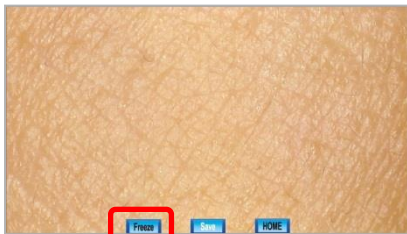
7-2-1 Single frame freeze (16:9)



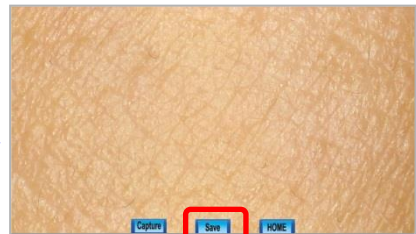
Click “1 Frame”



Entering live window.



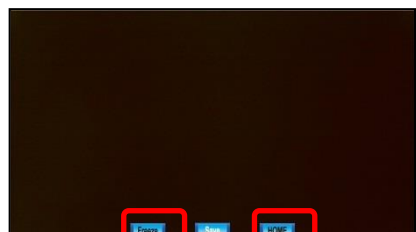
Capture the image by pressing “Freeze” button.



Press “Save” to save image.
Or you can get new image by pressing “Capture”.

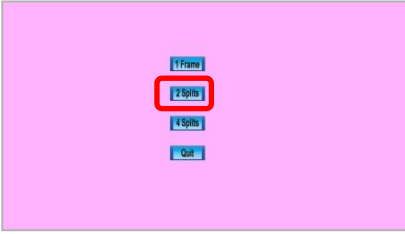


Find the folder you want to save, input the file name and press “Save”. Then this image will be saved in “.jpg” type.



After saving image you can press “Capture” to continue capture or you can press “HOME” to choose other function.

7-2-2 2 Split frames freeze (16:9)



Click "2 Splits".



Entering 2-1 live window.



Capture the image by pressing "Freeze" button.



(Press "Re-Capt." if you do not like 2-1 captured image.) Then press "Confirm".



2-1 freeze completed, press "Capture" to 2-2 image capture.



Entering 2-2 live window.



Capture the image by pressing "Freeze" button.



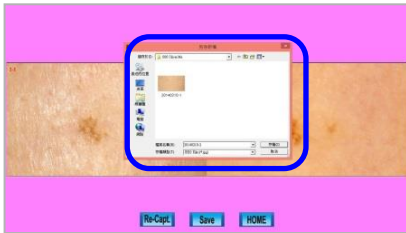
(Press "Re-Capt." if you do not like 2-2 captured image.) Then press "Confirm".



2-2 image capture completed. Press "**Compare**" to make 2 split frames comparison.



2 split frames comparison, you can press "**Save**" to save image (or "**Re-Capt.**" to continue new image capture).



Find the folder you want to save, input file name and press "Save". Then this image will be saved in ".jpg" type. After this, you can press "**Re-Capt.**" to continue new capture or you can press "**HOME**" to choose other function.

7-2-3 4 Split frames freeze (16:9)



Click "**4 Splits**" from home page, entering 4-1 live window.



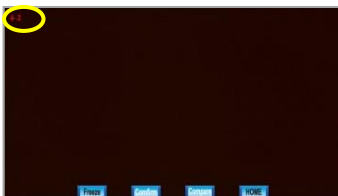
Capture the image by pressing "**Freeze**" button.



(Press "**Re-Capt.**" if you do not like 4-1 captured image.) Then press "**Confirm**".



4-1 freeze completed, then press "**Capture**" to 4-2 image capture.



Entering 4-2 live window.



Capture the image by pressing "**Freeze**" button.



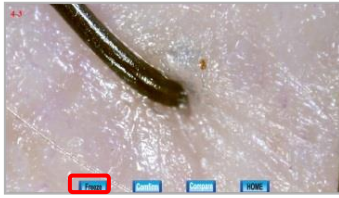
(Press **"Re-Capt."** if you do not like 4-2 captured image.) Then press **"Confirm"**.



4-2 freeze completed, then press **"Capture"** to 4-3 image capture.



Entering 4-3 live window.



Capture the image by pressing **"Freeze"** button.



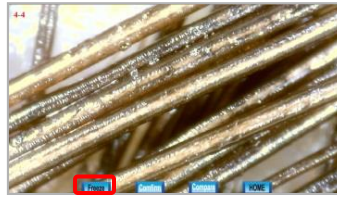
(Press **"Re-Capt."** if you do not like 4-3 captured image.) Then press **"Confirm"**.



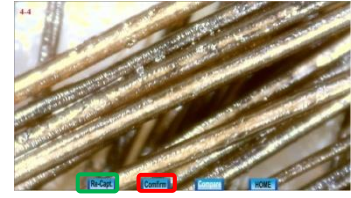
4-3 freeze completed, then press **"Capture"** to 4-4 image capture.



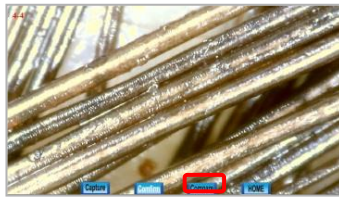
Entering 4-4 live window.



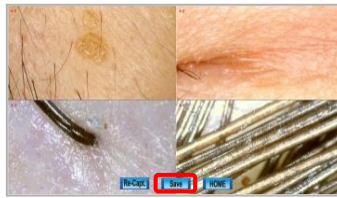
Capture the image by pressing **"Freeze"** button.



(Press **"Re-Capt."** if you do not like 4-4 captured image.) Then press **"Confirm"**.



4-4 image capture completed. Press **"Compare"** to make 4 split frames comparison.



4 split frames comparison, you can press **"Save"** to save image (or **"Re-Capt."** to continue new image capture).

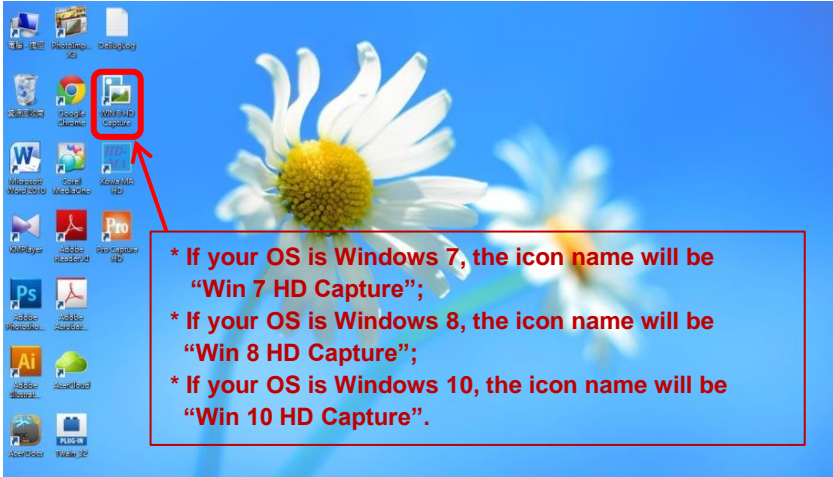


Find the folder you want to save, input file name and press **"Save"**. Then this image will be saved in **".jpg"** type. After this, you can press **"Re-Capt."** to continue new capture or you can press **"HOME"** to choose other function.

8. “HD-01 Capture” Program application

8-1 HD-01 Capture operation

- (1) Complete the installation in accordance with the system block diagram and fix the lens. Turn on the switches of both the unit and your computer.
- (2) Double click “HD-01 Capture” icon on computer desktop to enter the program.

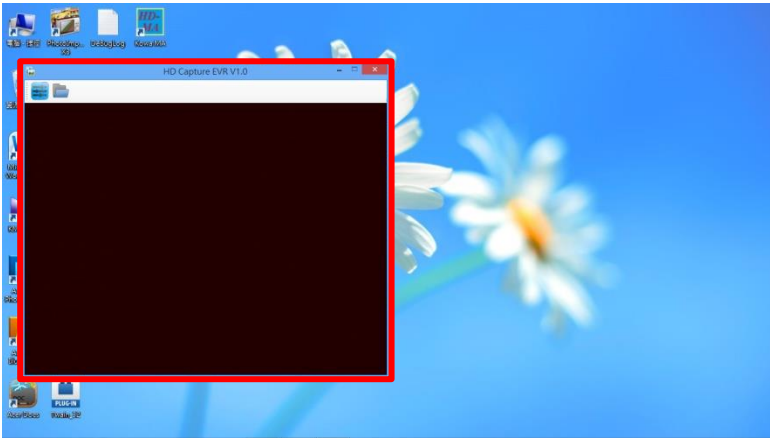


- (3) Lens with a contact type illumination head is intended to be placed on or held just above the viewing object, Then you will get a vivid image on the screen.

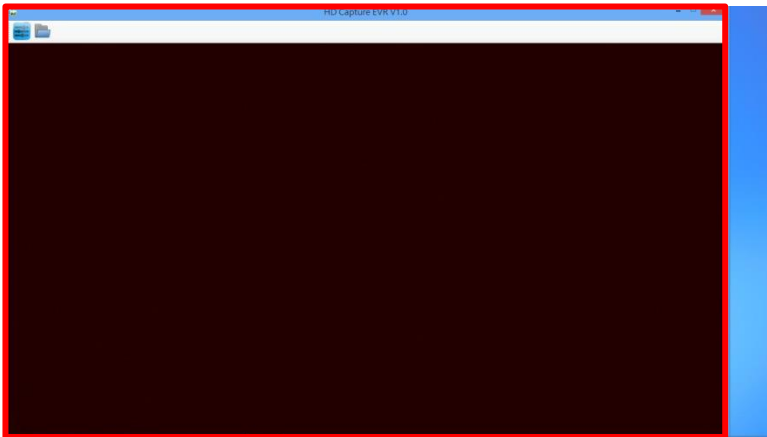


(4) Mode switch

Power on both the unit and your computer and enter “HD-01 Capture” program, the default window is in 640x480 VGA mode. If your computer screen resolution is with 1366 x 768 (or up), you can press “MODE” switch to 1280 X 720 HD mode (16:9 Wide screen) for enjoying the image in best high clarity.




640 X 480 VGA mode (4:3 Traditional screen)



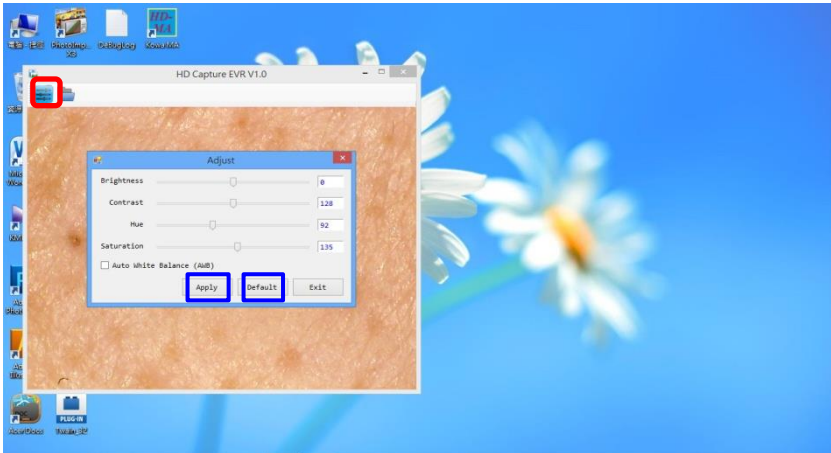
1280 X 720 HD mode (16:9 Wide screen)

(5) Color adjustment

“HD-01 Capture” can offer color adjustment. If you want to adjust the color by yourself. click the icon  from the upper left window, you can change the brightness, contrast, hue, saturation, etc. to your desirable value.

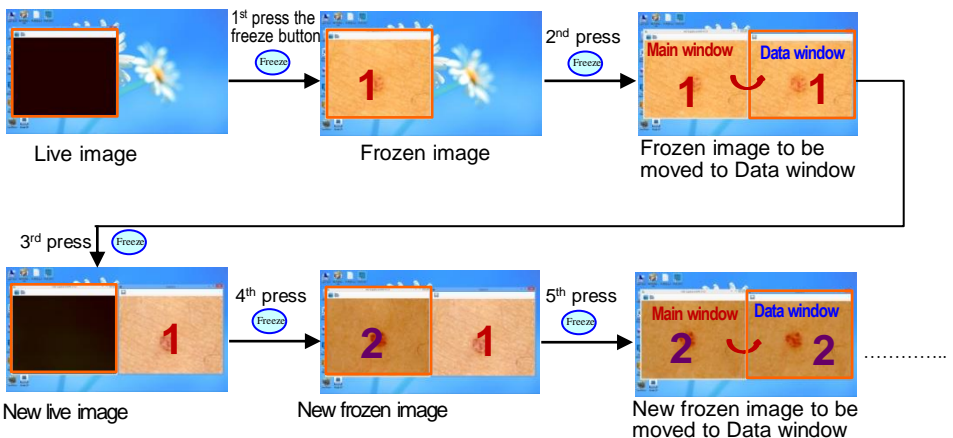
Click “Apply” to get your desirable color image.

If you want to change back to the original color setting, you can just click “Default” to get the original color image.



(6) FREEZE / RELEASE function

In “HD-01 Capture” the image freeze / release are all controlled by “Frame Freeze” button on the handy probe. Its procedures are as below:

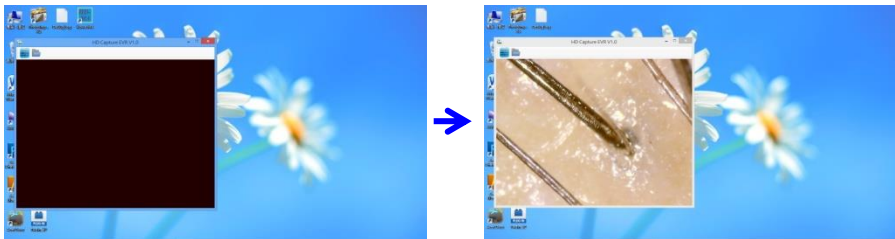


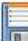
8-2. “HD-01 Capture” Operation / Application

8-2-1 Image Capture / save procedures (640 x 480 VGA mode)

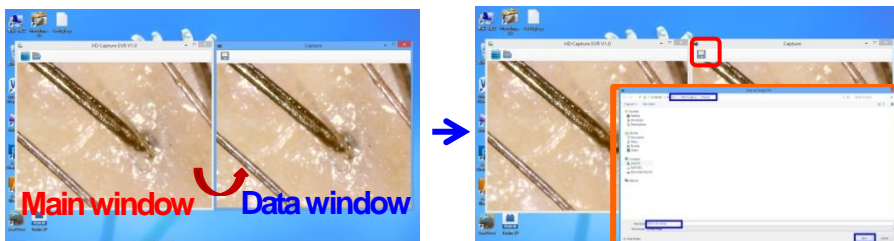
640 x 480 VGA (4:3) mode

- (1) Double click “HD-01 Capture” icon on computer desktop to enter the program. Press “Frame Freeze” button to capture the image from the live window.

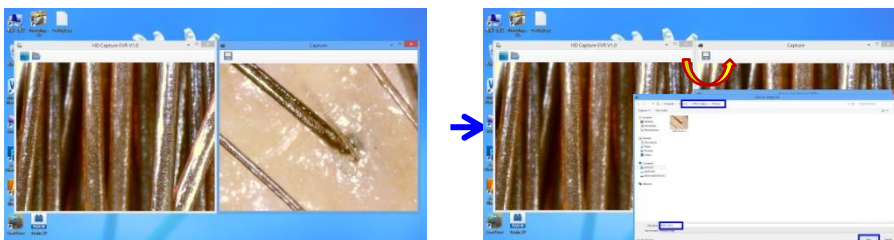


- (2) Press again “Frame Freeze” button and the image will be moved from the left Main window to the right side Data window. Now, you can save the image by clicking  icon on upper left Data window. Please find the folder you want to save, input the file name and press “Save”. Then this image will be saved in “.bmp” type.

(* HD-01 Capture” default path is: C:\WIN 8 (or WIN 7 or WIN 10) Capture \ Pictures. You can also path & save to your desirable folder.)

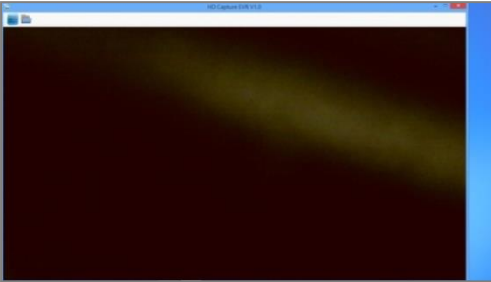


- (3) If you will continue capturing images, press “Frame Freeze” button to release the frozen image (make Main window live), press again to freeze new image and press again to move it the right Data window. Then you can save this new frozen image.



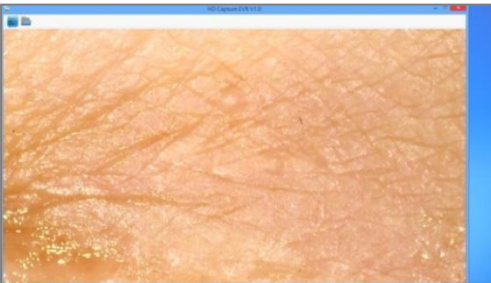
1280 x 720 HD (16:9) mode

- (4) When you are operating in “1280x720 HD mode”, since the image is nearly occupied the full screen, you can mouse the data window a little left in order to have facilitated observation or image save.

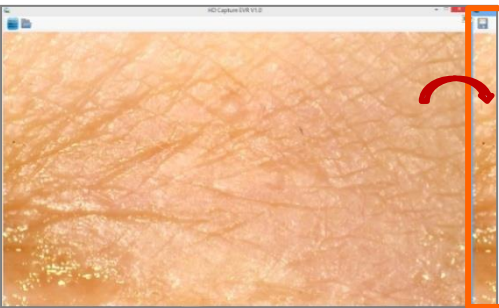


Procedures :

Press “MODE” switch on control box to 1280 X 720 HD mode (16:9 wide screen) and enter the live window.




Freeze the image under the live window.



Press again “Frame Freeze” button the frozen image is moving to right Data window.



Please use your mouse to move the Data window a little left and then click  icon to save image.

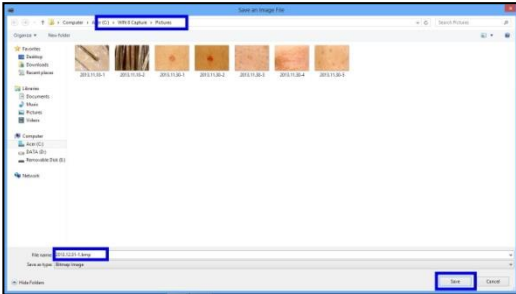
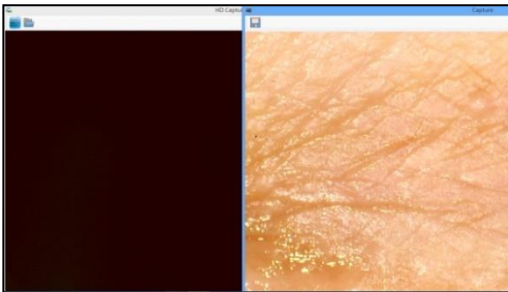
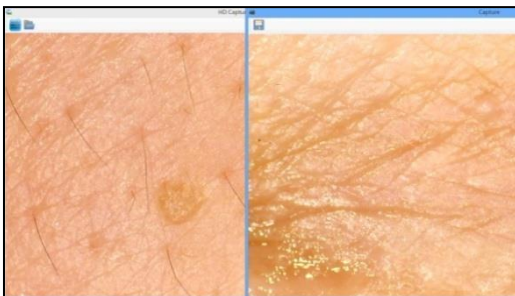


Image save --- please find the folder you want to save, input the file name and press “Save”. Then this image will be saved as “.bmp” type.




If you will continue capturing images, press “Frame Freeze” button to release the frozen image (make Main window live). frozen image.



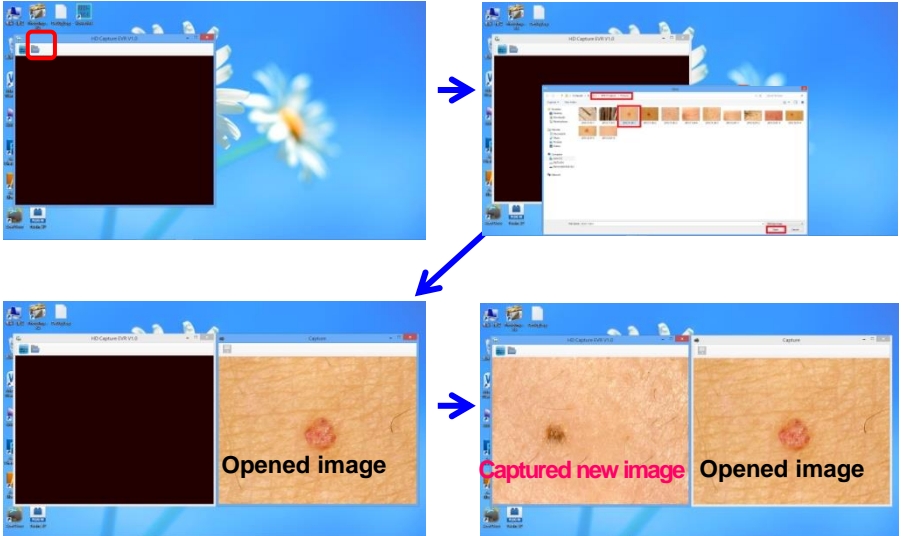
Press again “Frame Freeze” button to freeze new image and press again to move it the right Data window. Then you can save this new frozen image.

8-2-2 Image comparison

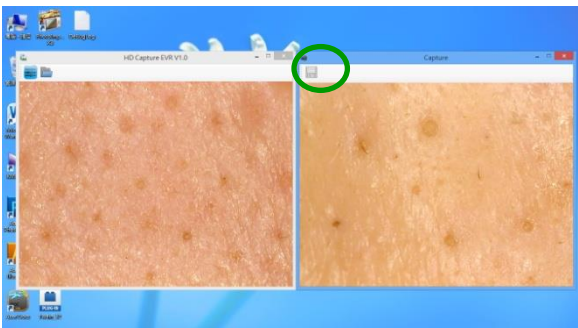
640 x 480 VGA (4:3) mode


- (1) In “HD-01 Capture” main window you can click  icon to open a saved image to compare the new image you are going to capture.

Find a saved image from the folder and press “Open”.



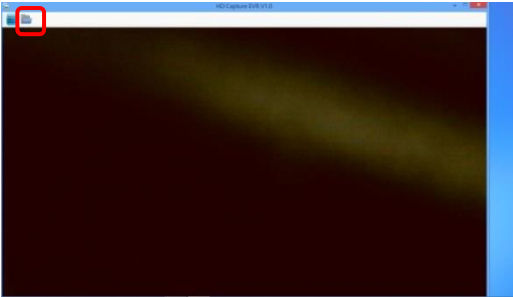
- (2) Now the opened image appears on the right Data window. You can capture a new image from the live main window to compare these 2 images.
- (3) You can also do the same method to open other saved image(s) to the Data window and capture new image (s) in Main window for comparison purpose.




Remark: In comparison mode,  icon is not available.

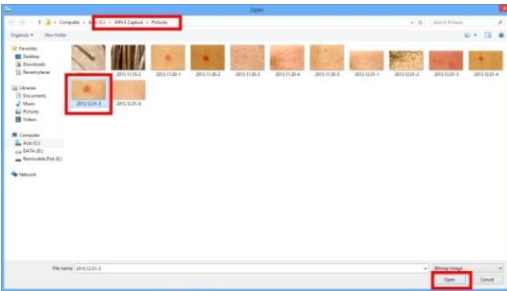
1280 x 720 HD (16:9) mode

(4) When you are operating in “1280x720 HD mode”, since the image is nearly occupied the full screen, you can mouse the data window a little left in order to have facilitated observation or image comparison.

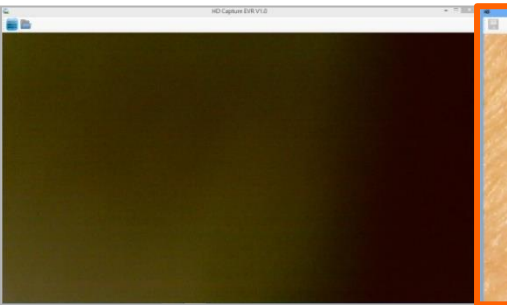


Procedures :

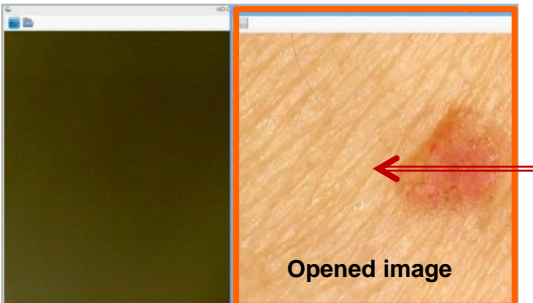
Enter the live Main window,
click  icon.

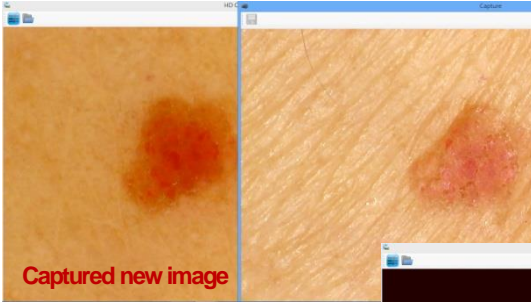


Find a saved image from the
folder and press “Open”.

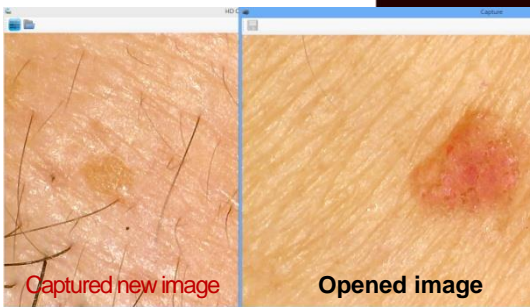
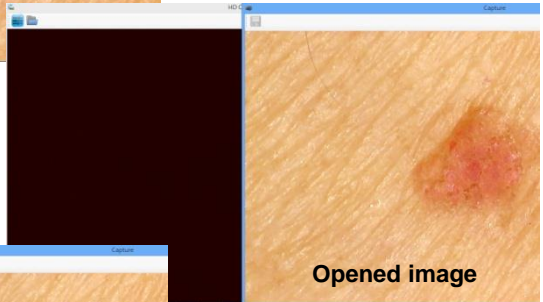


Now the opened image appears
on the right Data window. Please
use your mouse to move the
Data window a little left.





You can capture a new image from the live main window to compare these 2 images.



You can also do the same method to open other saved image(s) to the Data window and capture new image (s) in Main window for comparison purpose.

* TROUBLE SHOOTING

No.	TROUBLE	SHOOTING
1	Turn on the power switch, but no function, no light.	Check whether the AC/DC adaptor is properly connected.
2	The control box is powered on, but the handy probe doesn't work (the handy probe cannot offer light).	<ol style="list-style-type: none"> 1). Check if the cable between the control box and the handy probe is disconnected. 2). Check whether the lens is locked to its right position. (Make sure if the lamps inside the lens is light.)
3	No image on the screen.	<ol style="list-style-type: none"> 1). Check whether the control box and computer are powered on. 2). Check if the USB cable between the control box and computer is well-connected. 3). Connect the unit to another computer / screen to judge the unit or monitor is out of order in order to repair it.
4	How to clean if I find dust pots on screen?	<p>Take off the lens, you can blow out dust by using a small air pump or wipe the small glass of the camera (inside the handy probe) with a cotton bar.</p> <p>* Please hold the handy probe toward ground direction to avoid new dusts.</p> <p>If the camera gets mildewed under humid condition, please contact the engineer to clean it.</p>
5	The freeze function cannot work in "HD-01 Capture" or "1-2-4 CAPTURE" program.	<ol style="list-style-type: none"> 1). If you can see live image but cannot freeze it, please exit the program and restart the computer. 2). If you still cannot execute freeze / release function, please change another computer to test. 3). If the condition still keeps unchanged, it's possible the freeze button or the signal connection failed. We will call it back for repair.
6	How to adjust when the image color is out of harmony?	<p>Please adjust following buttons of your screen:</p> <ol style="list-style-type: none"> (1) TINT (2) SHARPNESS (3) BRIGHTNESS (4) COLOR
7	While using polarized lens to inspect surface skin (or deeper layer skin), why the lower part of screen becomes darker (or brighter)?	<p>It's because you do not rotate the black rubber ring to the bottom of its direction. So some light is covered (or some light is opened). You should completely rotate the black rubber ring of the polarized lens anti-clockwise (or clockwise).</p>